



# DOMINION ENERGY

## OUR PARTNERSHIP

***Kleinschmidt***



**Dominion  
Energy®**

Dedicated to a Renewable Future

# MORE THAN CONSULTANTS, WE ARE YOUR ALLY.

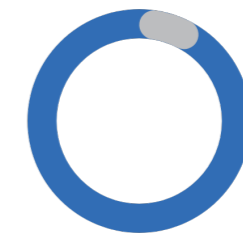
For over twenty years, we've had the privilege of working closely with Dominion Energy. Together, we've tackled more than **130 projects** across various areas, such as hydropower engineering, dam safety, fisheries engineering, aquatics studies, modeling & GIS, and FERC relicensing. These collaborations have played a significant role

in some of your standout renewable energy projects. What truly reflects the depth of our partnership is the extensive expertise and unwavering dedication we bring to your flagship projects. We're committed to nurturing our relationship with you and supporting your efforts every step of the way.

"The Kleinschmidt team continues to provide excellent service and value as they have for many years. Always a pleasure to work with Alison, Kelly, and the rest of the group. The Lexington SC office has supported us incredibly well over the years."  
- Ray Ammarell, Dominion Energy



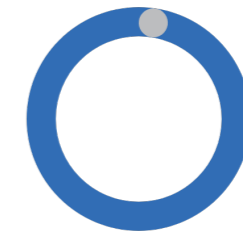
**33%** Hydropower Engineering Projects



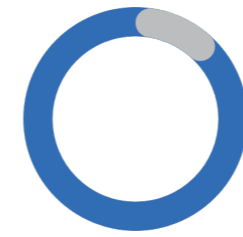
**10%** Licensing & Permitting Projects



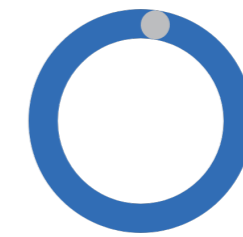
**23%** Dam Safety & Water Infrastructure Projects



**3%** Water Resource Engineering and Habitat Restoration



**14%** Fisheries Engineering Projects



**3%** GIS, Statistics & Modeling Projects

## OUR MISSION

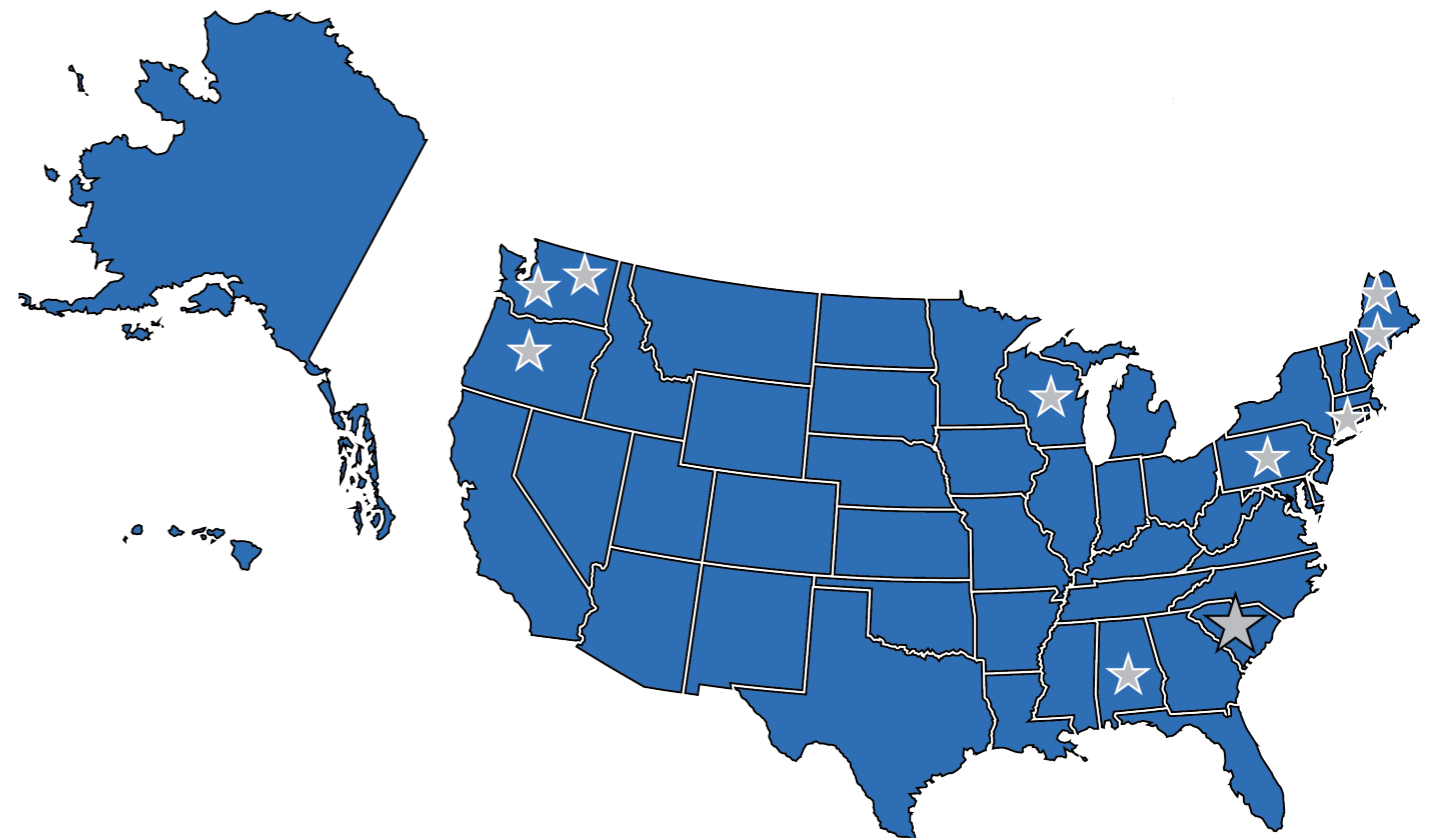
Our mission is to help balance engineering, regulatory, and science-based technical expertise with practical experience to solve our client's challenging renewable energy, water, and natural environment projects.

## OUR VISION

Kleinschmidt will be the go-to firm for empowered individuals to work on meaningful projects that build experience, recognition, and capabilities while creating financial success.

## OUR MOTTO

"Do good work and make a living at it. Enjoy what you are doing, and the rest will take care of itself."  
- R. Stevens Kleinschmidt



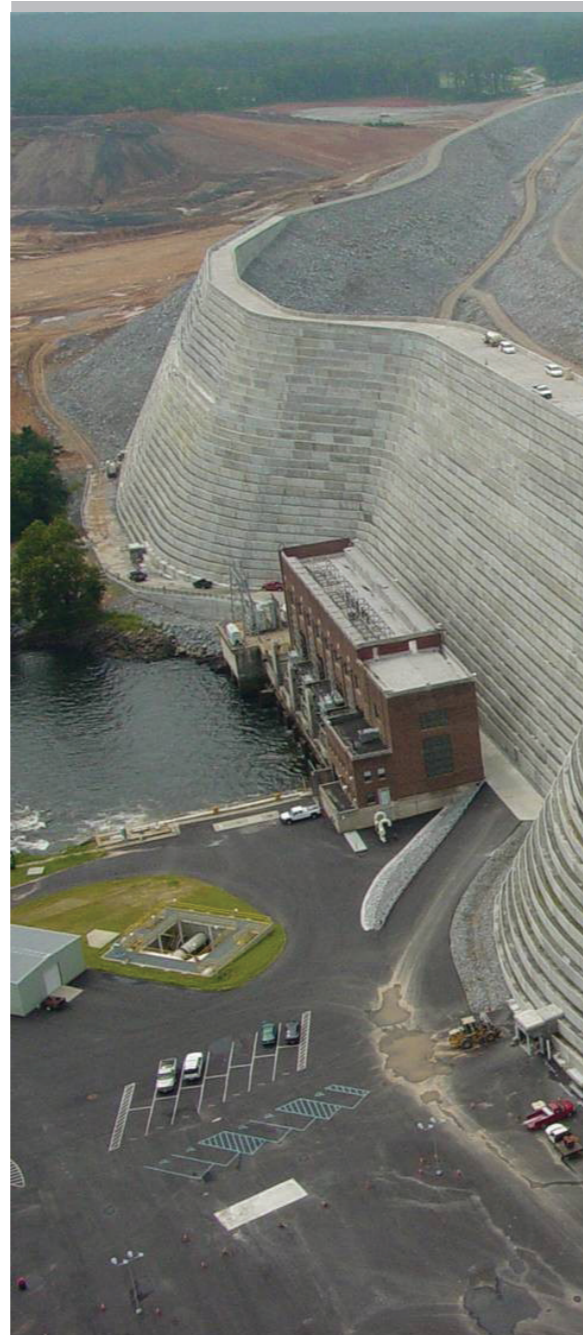
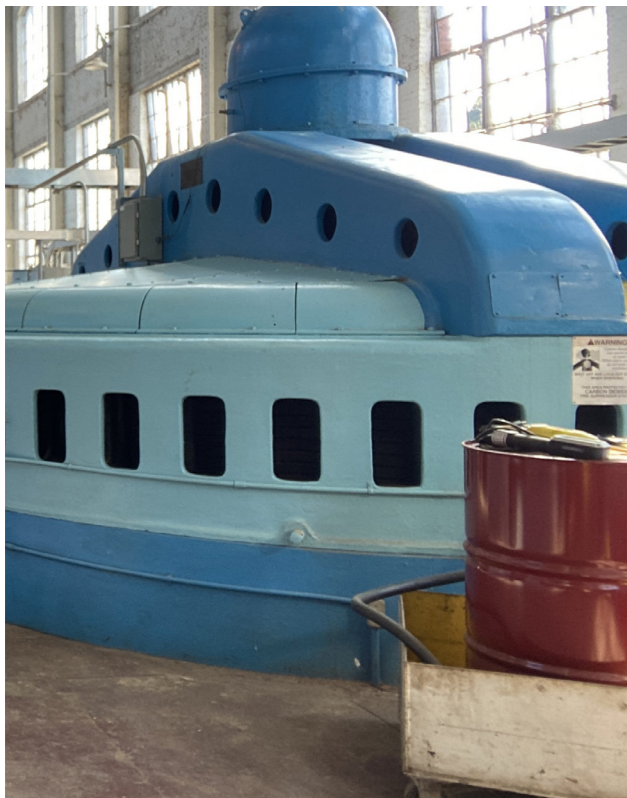
We have a strategic network of twelve offices across North America, two in Canada, including our office that was established by Paul Cyr in Lexington, SC, in 1995. The decision to open this office was made with you, Dominion Energy, in mind. We wanted to be closer, to collaborate more efficiently, and to align with your needs. Paul spent

35 years working hand-in-hand with your project teams, embodying our commitment to creating lasting relationships with our foundational clients. Paul retired in 2020, but his legacy has passed on to the next generation, ensuring that we keep our clients and those relationships we have built at the heart of everything we do.

## OUR PROJECT EXPERIENCE

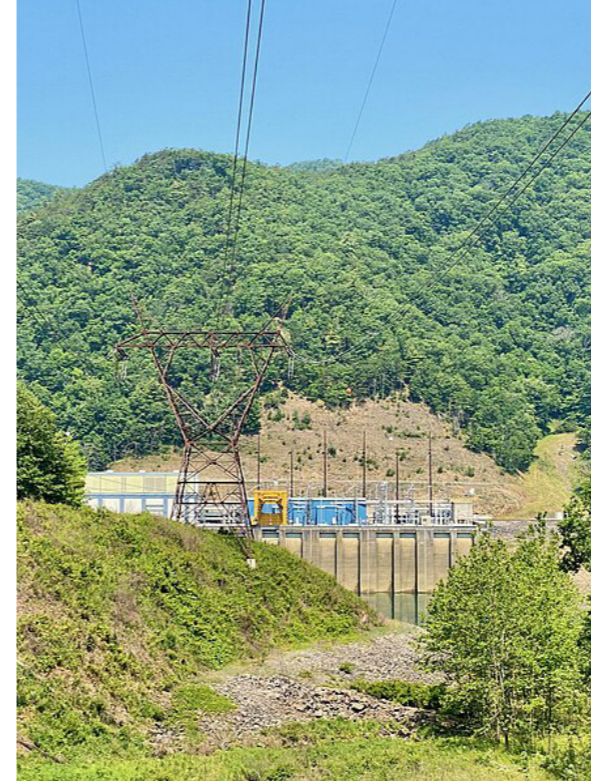
Over the years, we've built a strong history of working alongside Dominion and its predecessor in South Carolina, SCE&G, on various important projects, spanning regulatory work to hands-on engineering. Back when SCE&G was at the helm of the Columbia Hydroelectric Project—now under Lockhart Power—we were right there, helping navigate the relicensing process and playing a pivotal role in constructing fish ladders in the 90s and early 2000s. Our journey didn't stop there. We've also lent our expertise in regulatory and compliance support for the Neal Shoals Project and comprehensive support for the Saluda Hydro Project and Parr-Fairfield Pumped Storage Project. Right now, we're excited to be assisting with the relicensing of the Stevens Creek Project.

Our commitment extends beyond our local projects. In Virginia, we're working with Dominion to relicense the Bath County Pumped Storage Project and have also supported Dominion in meeting Section 401 Water Quality Permit requirements. Our goal has always been to support our partners through every phase of their projects, ensuring success not just on paper but in the real world where it counts.



### SALUDA HYDRO

At the Saluda Project, Kleinschmidt played a pivotal role alongside SCE&G, predecessor to Dominion Energy, in crafting and implementing a collaborative approach that led to the creation of a Comprehensive Relicensing Settlement Agreement (CRSA). This agreement, endorsed by 19 different entities, stands as a testament to our ability to work together towards common goals. We developed protection, mitigation, and enhancement (PME) measures across various resource areas, achieving a broad base of public support and consensus among all parties involved. This effort not only highlights our commitment to environmental stewardship and community engagement but also reflects our dedication to supporting Dominion Energy in achieving sustainable and mutually beneficial outcomes.



### PARR HYDRO

We have been deeply involved with the Parr Project since 2005, completing over a dozen engineering and regulatory projects that give us a detailed insight into its operations, infrastructure, and regulatory landscape. We see ourselves as an integral part of your team, essentially an extension of your engineering department. Our current role is to offer recommendations and create documentation that empowers you to proceed with confidence on this complex and crucial generator upgrade project. We're here to ensure that you have all the information and support you need to make informed decisions and successfully navigate this journey.



## BATH COUNTY HYDROPOWER

We've served as an instrumental partner to Dominion, aiding in the optimization of their relationships with key resource agencies. Our collaboration with Dominion ensures the achievement of success in agency partnerships throughout the relicensing endeavor. These connections, along with existing mitigation and enhancement measures and the project's relatively low environmental impact, have allowed us to advocate effectively for a streamlined number of studies. This approach not only demonstrates our commitment to environmental stewardship but also our ability to work efficiently within established frameworks to achieve positive outcomes.



### GASTON SHOALS

Our practical engineering design of upstream eel passage improvements and established a reputation as eel passage experts added credibility to resource agency negotiations. As a result, Dominion achieved favorable terms for upstream passage without the need for any design modifications, ensuring the project remained on schedule and within budget.

# MEET THE DOMINION CORE TEAM

Our Dominion team is more than just a group of professionals; it's a carefully selected blend of client leaders, project managers, and technical experts who have formed long-standing relationships with you and your leadership. This is due to their deep understanding of Dominion's history, values, and project specifics. These leaders are the spearheads of every project we undertake together, ensuring that our collaboration is always at the forefront of **innovation and excellence**.

The individuals we mention here are just the beginning of a much larger, **committed team ready to support Dominion's goals**. With over 55 years of experience backing us, our reputation for delivering effective solutions in renewable energy, water, and environmental projects stands strong. This is due to our preparation and our ability to present data in a clear, detailed, and expert manner. Together, we can achieve outstanding results.



**STEVE LAYMAN**  
Project Director & Regional VP



**ALISON JAKUPCA**  
Principal Consultant & Client Leader



## REGULATORY/SCIENCE TEAM



**KELLY KIRVEN**  
Project Licensing Coordinator



**JASON MOAK**  
Senior Scientist



**WILL PRUITT**  
Project Scientist



## ENGINEERING TEAM



**BILL REMINGTON**  
Client Leader



**BRET HOFFMAN**  
Senior Engineering Consultant, Mechanical Engineer



**HAL RIDDLE**  
Senior Engineering Consultant, PM



**HEATHER MARTIN**  
Structural Engineer, PM



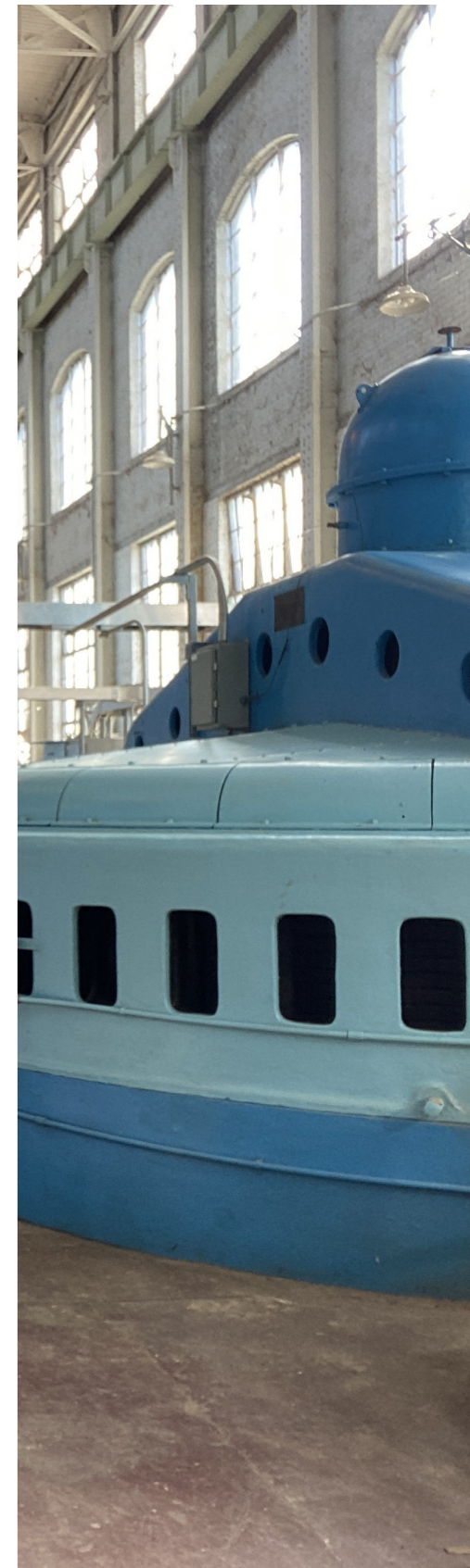
**STEVE POTEET**  
Senior Engineering Advisor, PM



**NICK CIOMEI**  
Senior Engineer, PM



**JESSE WALDRUP**  
Principal Consultant, Fish Passage Design Leader





## YOU MATTER TO US



For over two decades, Bret has been a cornerstone in our partnership with Dominion, embodying a personal commitment to the success of each project he's involved with. His journey with

Dominion kicked off with the Lower Saluda River Warning Siren Installation Project, which not only highlighted the critical nature of staying on schedule but also laid the groundwork for many years of work at the Saluda Hydroelectric Project. His dedication is amplified through his collaborative work with the Dominion team, aiming for shared successes and building a foundation of mutual respect.

This partnership has allowed Bret to immerse himself in a variety of project types, significantly broadening his understanding of the hydroelectric sector. His expanded expertise now plays a crucial role in assessing operational changes and modernizing equipment, marking his evolution as a seasoned mechanical engineer in the hydroelectric field. This journey reflects Bret's growth and the depth of our collaborative relationship with Dominion, showcasing a shared commitment to excellence and innovation.



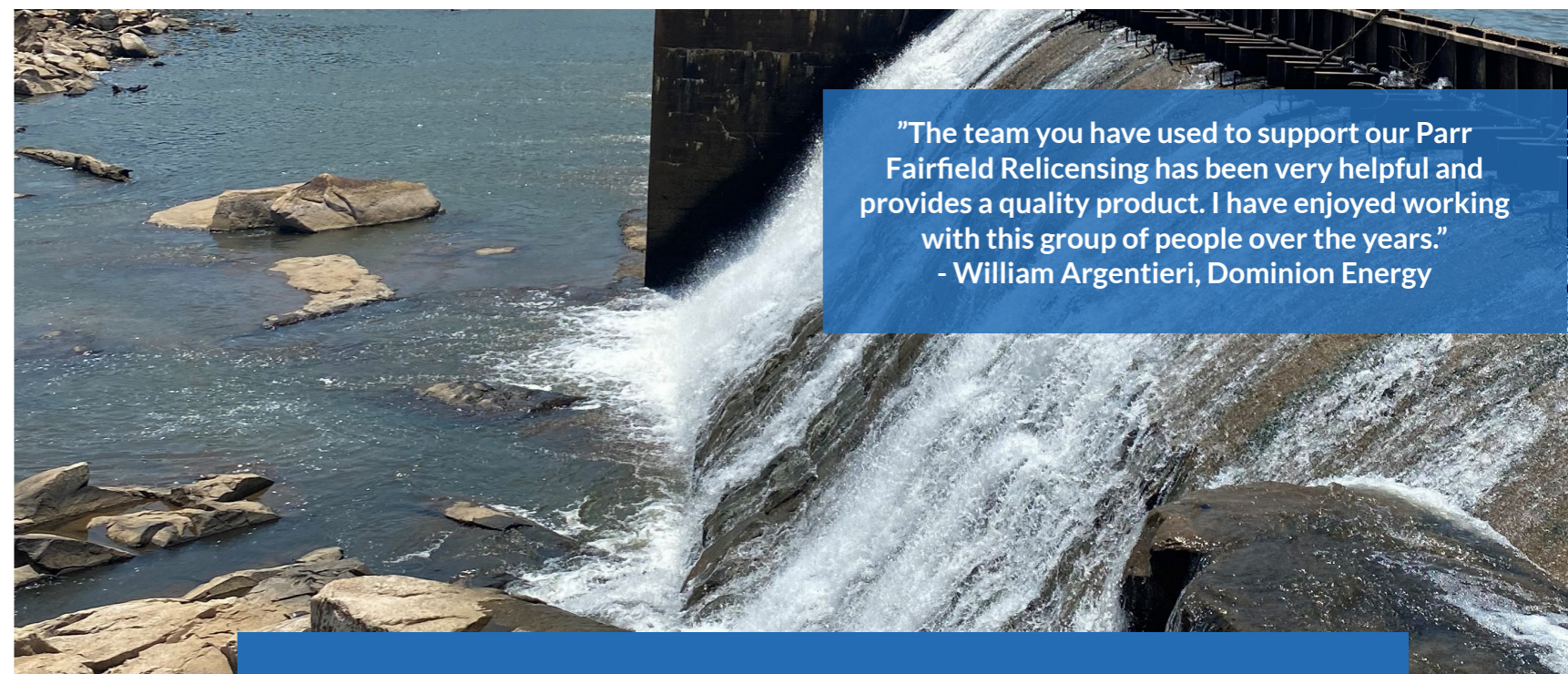
[Click here to view video's from our Regional VP & Client Lead.](#)



Alison's journey with Dominion Energy spans over two decades, beginning with her crucial role in the Saluda Hydro Relicensing project. Throughout this time, Alison has not only contributed her

skills but also built lasting relationships with the Dominion team. For her, working with Dominion transcends mere professional engagement—it's about being part of a team where each project is undertaken with care and dedication. Alison sees Dominion's successes as her own.

Her career has been significantly shaped by the mentorship and support of Ray Ammarell and Amy Bresnahan, who have been instrumental in her professional development. This mentorship highlights the collaborative culture that underpins our shared achievements. Alison's story is a testament to the deep, personal connections that form the foundation of our successful partnership with Dominion Energy, emphasizing a mutual commitment to excellence and growth.



**"The team you have used to support our Parr Fairfield Relicensing has been very helpful and provides a quality product. I have enjoyed working with this group of people over the years."**  
**- William Argentieri, Dominion Energy**

## OUR SERVICES

Our reputation in delivering effective solutions for renewable energy, water, and environmental projects is built on **over 55 years of experience**, characterized by our analytical skillset, comprehensive preparation, and the presentation of project data in a coherent, detailed, and technically proficient way.



**HYDROPOWER ENGINEERING**



**ENVIRONMENTAL SERVICES**



**DAM SAFETY & WATER INFRASTRUCTURE ENGINEERING**



**FISHERIES ENGINEERING**



**LICENSING & PERMITTING**



**WATER RESOURCE & HABITAT RESTORATION**



**GIS, STATISTICS & MODELING**



## LET US KNOW HOW WE CAN HELP YOU!

Steve Layman, Project Director  
Southeast Regional Vice President  
770.625.7946  
[steven.layman@kleinschmidtgroup.com](mailto:steven.layman@kleinschmidtgroup.com)

Alison Jakupca, Client Leader  
Principal Consultant  
803.462.5628  
[alison.jakupca@kleinschmidtgroup.com](mailto:alison.jakupca@kleinschmidtgroup.com)